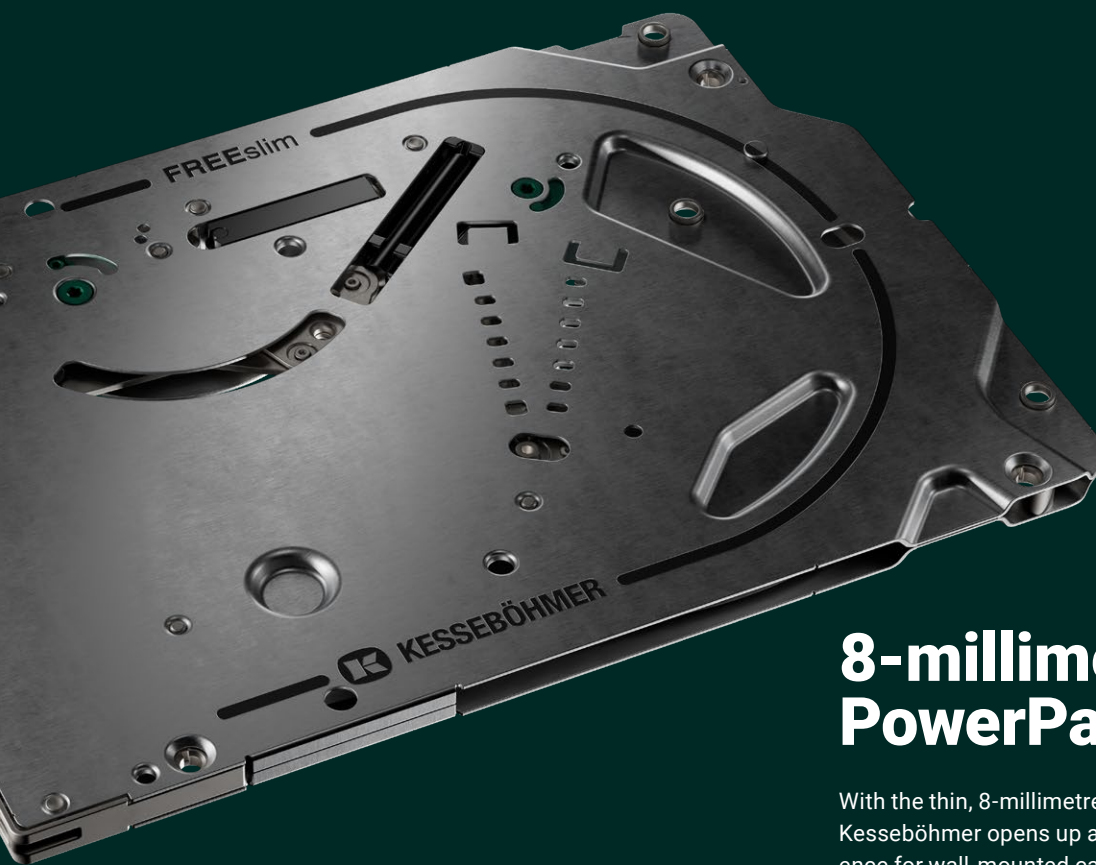




FREEslim flap

ULTRA-THIN FLAP FITTING



8-millimetre- PowerPad

With the thin, 8-millimetre FREEslim PowerPad, Kesseböhmer opens up a new dimension of convenience for wall-mounted cabinets. The versatile lifter is no thicker than an iPad and opens up storage space exactly where it's needed. FREEslim can be screwed onto the side panel of a cabinet – or it can disappear into the side panel from the outside.



STANDARD INSTALLATION



PERFECT INTEGRATION

Maximum installation freedom


Cabinet makers, furniture manufacturers, fitters – anyone working with FREEslim will discover a well-thought out product that can easily be integrated into the widest range of furniture designs, whilst offering the greatest possible design freedom during installation. The fitting can be screwed onto the side panel of a cabinet – or it can disappear into the side panel from the outside.

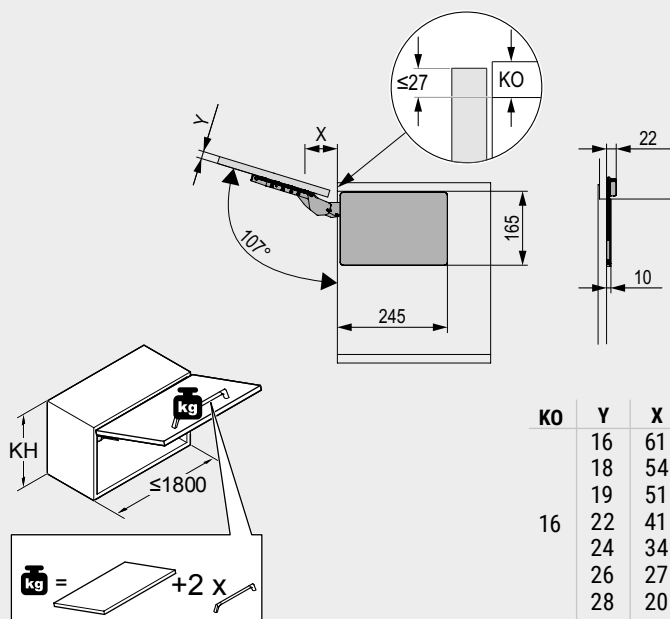


Variant reduction with same quality

This reduction in variants ensures large load capacity ranges and thus significantly fewer variants. Symmetrical components and the separation of the lever arm and power unit also contribute to efficiently and consistently reducing the number of items. Thanks to this feat of engineering, Kesseböhmer could cut the number of components greatly.



PF* = KH x 	XS-L
	2724390006 2724420006
	PF
* Power Factor	480 - 4800
225	2,1 - 21,3
250	1,9 - 19,2
275	1,7 - 17,5
300	1,7 - 16,0
325	1,6 - 14,8
350	1,5 - 13,7
375	1,3 - 12,8
400	1,2 - 12,0
425	1,1 - 11,3
450	1,1 - 10,7
475	1,0 - 10,1
500	1,0 - 9,6
525	0,9 - 9,1
550	0,9 - 8,7
575	0,8 - 8,3
600	0,8 - 8,0
625	0,8 - 7,7
650	0,7 - 7,4



Features



ClickFixx reduces installation time and at the same time ensures a high standard of installation.



Opening angle limiter

The opening angle limiter prevents damage to the fronts of adjacent components.



SoftSTOPP for damped closing of the storage cabinet.



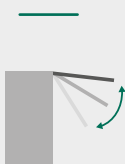
push-to-open

A gentle push against the front with the hand or even the knee triggers a fully automatic, gentle and harmonious opening process.



3D Adjust

The individual height adjustment creates the optimum space for every storage item.



Multipositions stop

Multi-position stop enables doors to be held open in any position.

All product benefits at a glance

- » Maximum design freedom thanks to various installation options – Screwed on or integrated into the side of the cabinet
- » Hands-free assembly using plug-in positioning pins or quick assembly without pre-drilling
- » Easy opening of the front thanks to innovative technology in the 8 millimetre thin PowerPad
- » Reduced number of variants thanks to revolutionary spring technology and symmetrical components (can be used on the left and right)
- » Extremely wide force range thanks to revolutionary spring technology
- » Safety clip to prevent lever arms from springing up

FREEslim flap

PowerPad FREEslim flap

PU 1, with soft close
consisting of:
2 PowerPad FREEslim flap
4 Positioning pins
8 Spax-Screw 4x20 mm



Cabinet height	PU	Power factor	Front weight at reference height 400 mm	Nickel
225 – 650 mm	1	480 – 4.800	1,2 - 12,0 kg	272439 0006

PowerPad FREEslim flap pto

PU 1, mit Push-to-Open
consisting of:
2 PowerPad FREEslim flap pto
4 Positioning pins
8 Spax-Schraube 4x20 mm



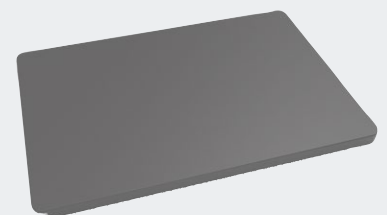
Cabinet height	PU	Power factor	Front weight at reference height 400 mm	Nickel
225 – 650 mm	1	480 – 4.800	1,2 - 12,0 kg	272442 0006

Accessories

FREEslim flap cover caps

PU 1 consisting of:
2 Cover for power units
1 Mounting instruction

Colour code:		272446 7035
Grey	7035	272446 7500
Anthracite	7500	272446 9005
Black	9005	272446 9966
Ice white	9966	



Accessories

FREEslim front mounting

for wood/aluminium frame front

PU 1 consisting of:

2 Front mounting for wood/aluminium
frame fronts

incl. fixing screws and covers

Colour code:

Grey	7035
Anthracite	7500
Black	9005
Ice white	9966

Item No.

272443 7035

272443 7500

272443 9005

272443 9966



FREEslim front mounting

Expansion dowel D=10 mm

PU 1 consisting of:

2 Front attachment with pre-assembled
expansion plugs and pre-assembled

Screws incl. covers

Colour code:

Grey	7035
Anthracite	7500
Black	9005
Ice white	9966

272444 7035

272444 7500

272444 9005

272444 9966



FREEslim flap accessory set for integration from outside

PU 1, consisting of:

2 Cover for power unit

2 Cover for flap

2 Cover plug for power adjustment

4 External integration fastening screw

1 Furniture connector cover

1 Mounting instructions

Colour code:

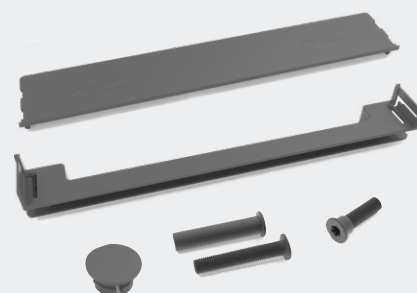
Grey	7035
Anthracite	7500
Black	9005
Ice white	9966

272445 7035

272445 7500

272445 9005

272445 9966



pto ejector, short, Typ III "Strong"

Force 27 N (average value)

PU 10

Colour code:

Grey	7035
Anthracite	7500
Black	9005
Ice white	9966

272449 7035

272449 7500

272449 9005

272449 9966



Screw-on housing set for pto ejector

incl. fixing screws

PU 10

Colour code:

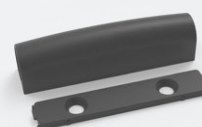
Grey	7035
Anthracite	7500
Black	9005
Ice white	9966

272450 7035

272450 7500

272450 9005

272450 9966



Set of aluminium frame adapters

'narrow' 19-21 mm

incl. fixing screws

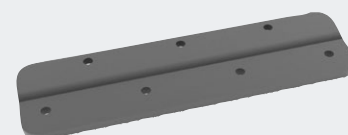
PU 10

Colour code:

Nickel	0006
Black	0022

272451 0006

272451 0022





WWW.KESSEBOEHMER.COM

